



# airfel

Refrigeration  
Products Catalogue

# content

PAGE  
**03-11**

## **SERVICE COUNTERS**

>03-04 Encho > 05-06 Magatta > 07-08 Koto  
>09-10 Mashita >11 Service Counter Accessories

PAGE  
**12-22**

## **MULTIDECK CABINETS**

>12-15 Miru >16 Kaizu > 17 Alet > 18Arata  
> 19-20 Amarah> 21-22Atama

PAGE  
**23-25**

## **COMBINATION CABINETS**

>23-24 Nova > 25 Daburu

PAGE  
**26-31**

## **ISLANDS & PROMOTIONAL**

> 26 Conzu >27 Fioro > 28 Kopto >29 Era  
>30 Erabas > 31 Erata



# Encho

SERVICE COUNTERS WITH ELEGANT FLAT GLASS DESIGN



- Remote or Plug-in version for different installation needs
- Bain Marie & Hot Plate versions available for hot or cold items
- Front Square Lifting Glass for convenient access
- Stainless steel evaporator basin with counter options available

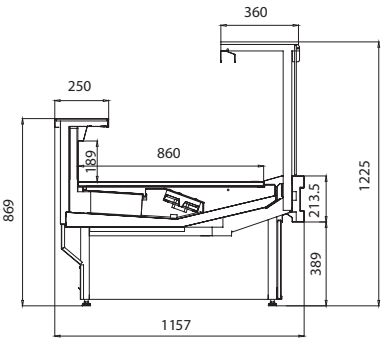


- Tailor made finishing - Variable Color or Front Cladding
- Customizable lower portion to be column or closed-type
- Available LED lighting customizable in colours adapted to products
- Fan-forced refrigeration to provide consistent cooling
- Superior insulation for energy efficient performance
- Ample space for showcasing products with high visibility.

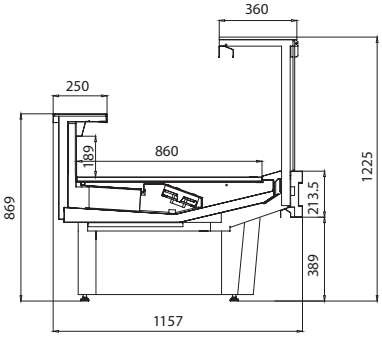


■ Technical Details

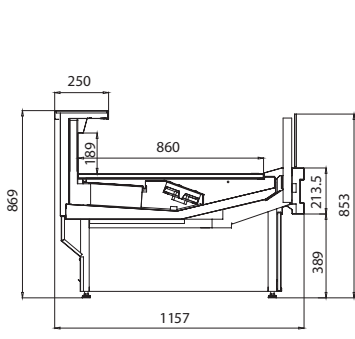
Encho



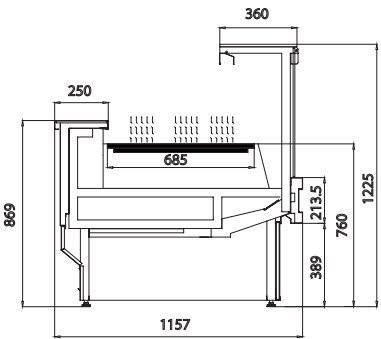
Encho columnl



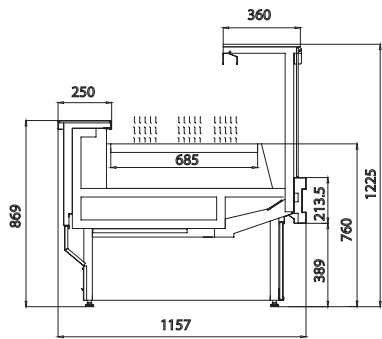
Encho self-service



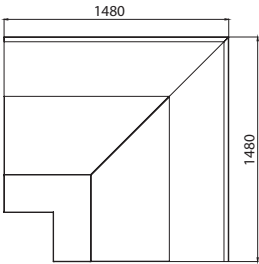
Encho hot plate



Encho bain marie



Encho corner



Cabinet length without endwalls	(mm)	937	1250	1875	2500	3750
Display area	( m²)	0.80	1.07	1.61	2.15	3.22
Operating voltage	230 V/50/60 Hz					
Working temperature	0 / +2 °C		+3 / +5 °C			

Operating features are based on ambient conditions of 25 °C temperature and 60% relative humidity. Any technical features may be modified without notice.



# Magatta

SERVICE COUNTERS WITH CURVED GLASS DESIGN

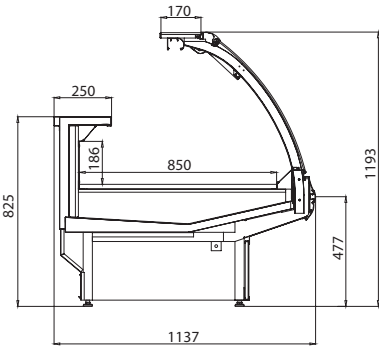


- Remote or Plug-in version for different installation needs
- Bain Marie & Hot Plate versions available for hot or cold items
- Ergonomic circular out corner
- Customizable lower portion to be pedestal-leg or closed-type
- Available LED lighting customizable in colours adapted to products
- Stainless steel evaporator basin with counter options available
- Fan-forced refrigeration to provide consistent cooling
- Superior insulation for energy efficient performance

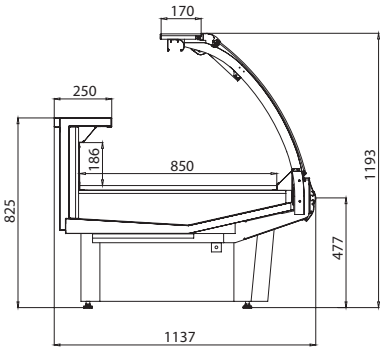


■ Technical Details

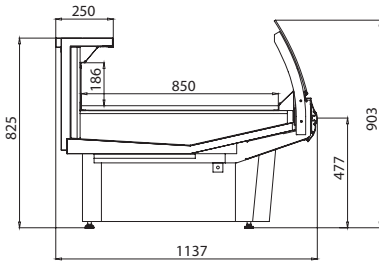
Magatta



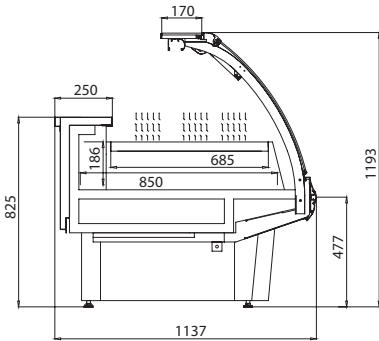
Magatta column



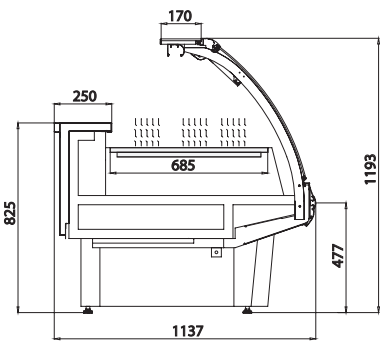
Magatta self-service



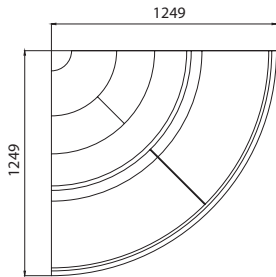
Magatta hot plate



Magatta bain marie



Magatta corner



Cabinet length without endwalls	(mm)	937	1250	1875	2500	3750
Display area	( m²)	0.80	1.06	1.59	2.13	3.19
Operating voltage		230 V/50/60 Hz				
Working temperature		0 / +2 °C		+3 / +5 °C		

Operating features are based on ambient conditions of 25 °C temperature and 60% relative humidity. Any technical features may be modified without notice.

# Koto

SERVICE COUNTERS WITH STYLISH CURVED GLASS DESIGN



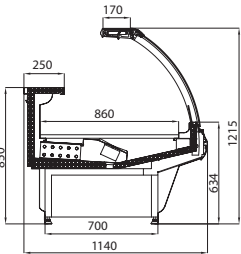
- Remote or Plug-in version for different installation needs
- Bain Marie & Hot Plate versions available for hot or cold items
- Ergonomic circular out corner
- Customizable lower portion to be pedestal-leg or closed-type
- Available LED lighting customizable in colours adapted to products
- Stainless steel evaporator basin with counter options available
- Fan-forced refrigeration to provide consistent cooling
- Superior insulation for energy efficient performance
- Ample space for showcasing products



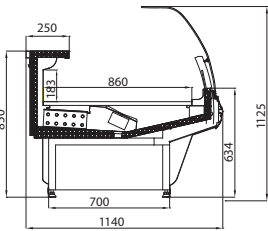


■ Technical Details

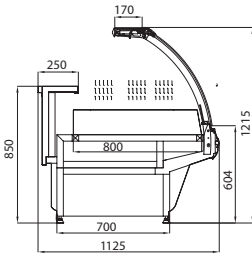
Koto (lift glass)



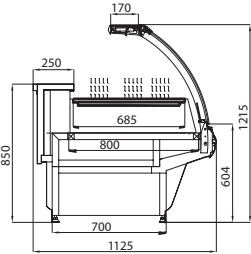
Koto (drop glass)



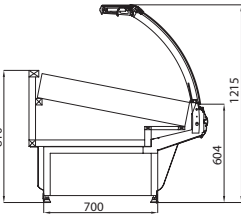
bain marie



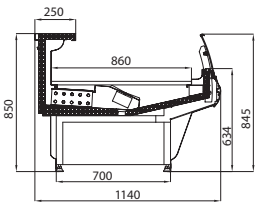
hot plate



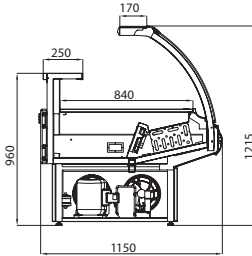
fish



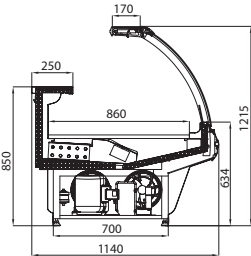
self service



PLUG-IN

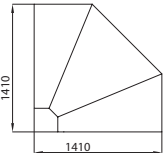


With storage

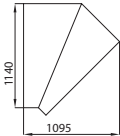


Without storage

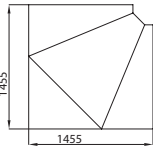
corners



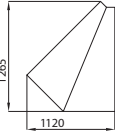
90° Internal Corner



45° Internal Corner



90° External Corner



45° External Corner

Cabinet length without endwalls	(mm)	937	1250	1875	2500	3750
Display area	( m²)	0.80	1.07	1.61	2.15	3.22
Net weight		105	131	192	244	315
Operating voltage		230 V/50/60 Hz				
Working temperature		0 / +2 °C		+3 / +5 °C		

Operating features are based on ambient conditions of 25 °C temperature and 60% relative humidity. Any technical features may be modified without notice.

# Mashita

BAKERY DISPLAY CASES

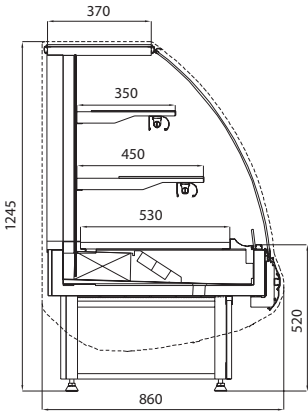


- Serve over counter for pastry and bakery products
- Refrigerated or non refrigerated versions based on need
- Remote or Plug-in version for different installation needs
- Tailor made finishing - Variable Colour or Front Cladding
- Ergonomic design and easy cleaning accessibility
- Fan-forced refrigeration to provide consistent cooling
- Superior insulation for energy efficient performance
- Ample space for showcasing products

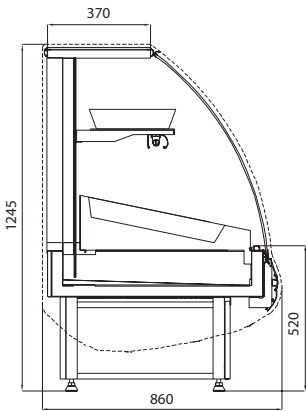


■ Technical Details

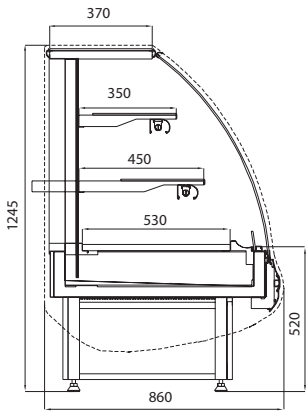
Pastry



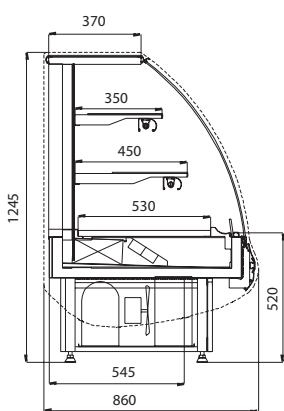
Nuts



Bakery



Plug in

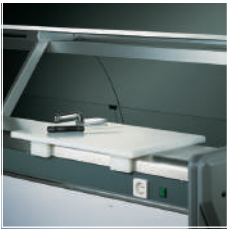


Cabinet length without endwalls		(mm)	900	1800	2700
Display area	( m²)	pastry	1.35	2.70	4.05
		nuts	0.81	1.62	2.43
		bakery	1.25	2.50	3.75
Net weight		pastry	165	260	355
		nuts	130	220	310
		bakery	100	180	260
Working temperature		pastry	+3 / +6 °C		
		nuts			
		bakery	+35 / +45 °C		
Operating voltage			230 V/50/60 Hz		

Operating features are based on ambient conditions of 25 °C temperature and 60% relative humidity. Any technical features may be modified without notice.



Polyethylene trencher platform



Knives holder



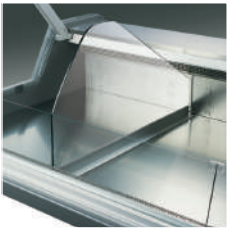
Paper holder



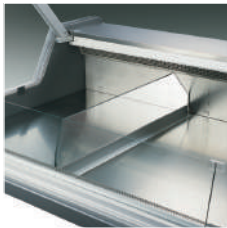
Scale machine carrier



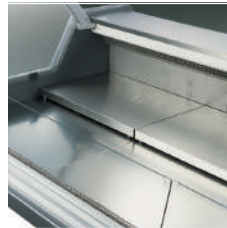
High glass divider



Low glass divider



Moveable stainless steel display deck



Display grid



Olives, pickles



# Miru

MULTIDECK CABINET FOR DAIRY, MEAT, FRUIT AND VEGETABLE PRODUCTS



- Remote cabinet
- Wide display area due to the low front base
- High refrigeration output, low energy consumption
- Superior insulation for energy efficient performance
- PVC bumper for cabinet protection
- Equal air flow between display shelves
- Tailor made finishing - Cabinet Colour per requirement
- Ample space for showcasing products

- OPTIONAL ACCESSORIES :
- Mirrored or Glazed Cabinet End Walls
  - Under-Shelf Lighting (T5 or LED)
  - Electrical or Manual Night Blinds





# Miru glasssdoor



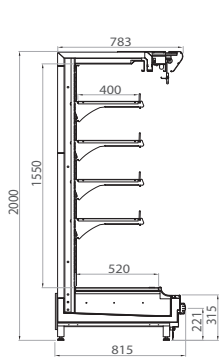
- Energy Savings Shelves for maximum efficiency
- Customizable single or double-glazed doors
- Frameless glass to maximize displayed products view
- Tempered Glass minimises breakage risk and prevents harm
- Glasses designed to minimize vaporization
- Superior insulation for energy efficient performance
- Ample space for showcasing products



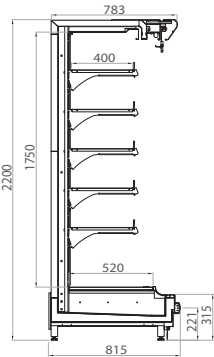


■ Technical Details

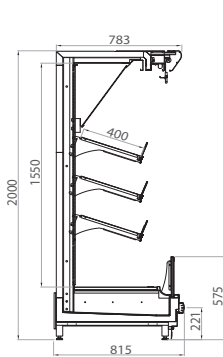
Miru 80 D



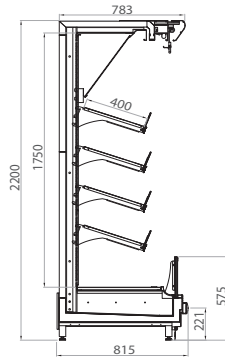
Miru 80 DL



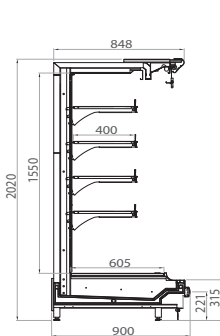
Miru 80 M



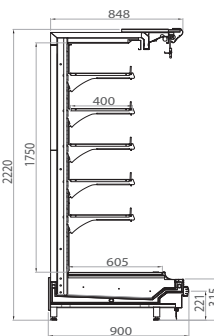
Miru 80 ML



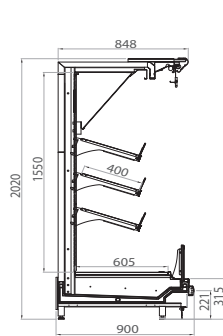
Miru 90 D



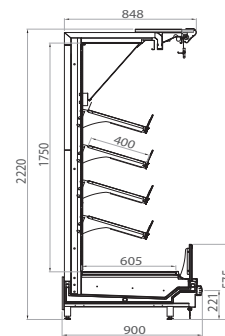
Miru 90 DL



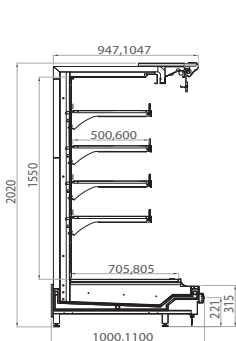
Miru 90 M



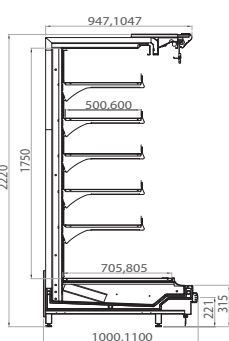
Miru 90 ML



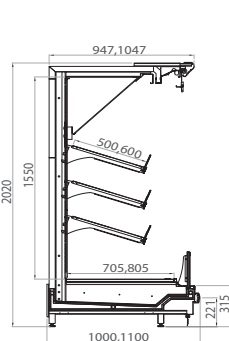
Miru 100 / 110 D



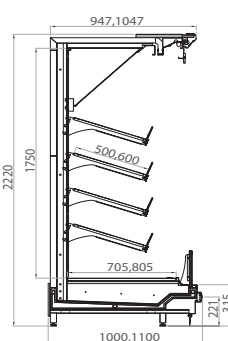
Miru 100 / 110 DL



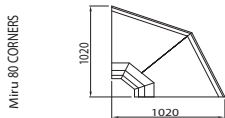
Miru 100 / 110 M



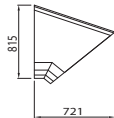
Miru 100 / 110 ML



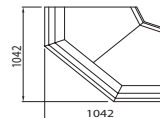
90° Internal Corner



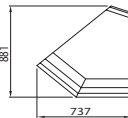
45° Internal Corner



90° External Corner

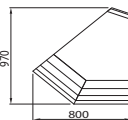
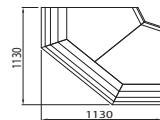
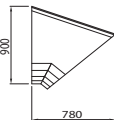
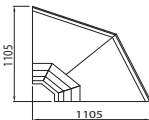


90° External Corner

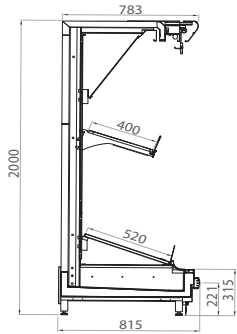


Miru 80 CORNERS

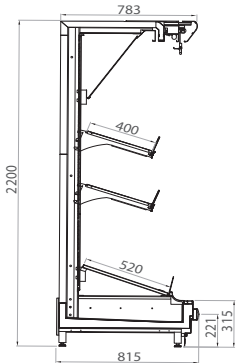
Miru 90 CORNERS



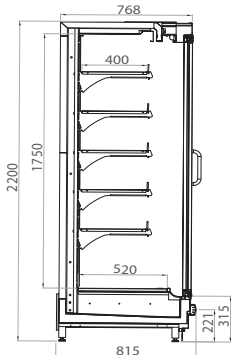
Miru 80 FV



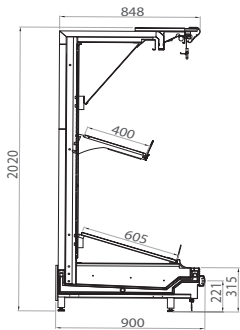
Miru 80 FVL



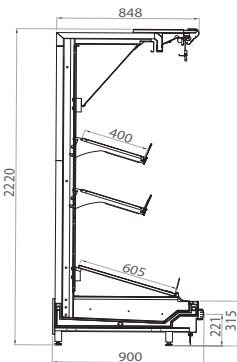
Miru 80 DL GLASS DOOR



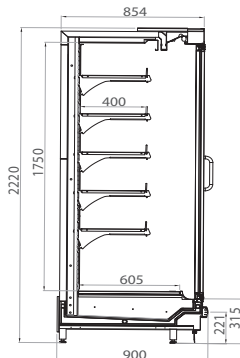
Miru 90 FV



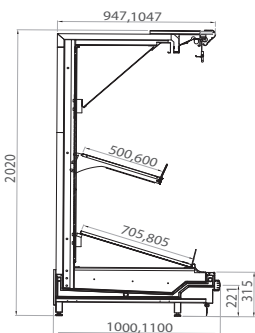
Miru 90 FVL



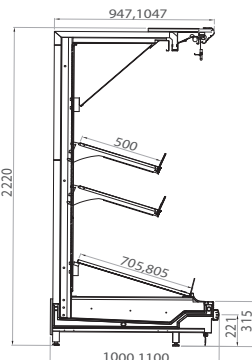
Miru 90 DL GLASS DOOR



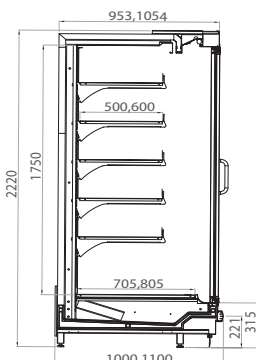
Miru 100 / 110 FV



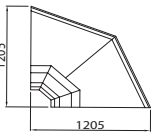
Miru 100 / 110 FVL



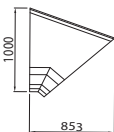
Miru 100 / 110 DL GLASS DOOR



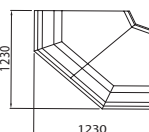
90° Internal Corner



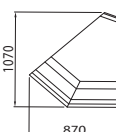
45° Internal Corner



90° External Corner

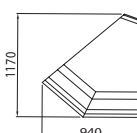
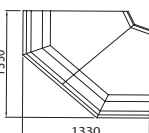
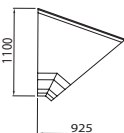
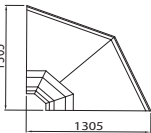


90° External Corner



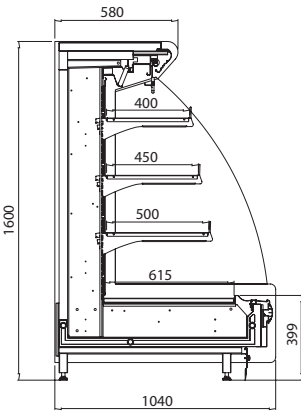
Miru 100 CORNERS

Miru 110 CORNERS



# Kaizu

SEMI-VERTICAL CABINET FOR DAIRY, MEAT, FRUIT AND VEGETABLE PRODUCTS



- Remote Cabinet with or without glass doors
- High refrigeration output, low energy consumption
- Low shelf provides easy accessibility for products
- Island type application ideal for open space layouts
- Flexible shelf options available with 2 or 3 rows per needs
- Ergonomic design for seamless operation
- Tailor made finishing - Cabinet Colour per requirement

■ Technical Details

Cabinet length without endwalls	(mm)	937	1250	1875	2500	3750
Display area	( m²)	1.84	2.46	3.68	4.91	7.37
Operating voltage		230 V/50/60 Hz				
Working temperature		+2 / +4 °C				

Operating features are based on ambient conditions of 25 °C temperature and 60% relative humidity. Any technical features may be modified without notice.

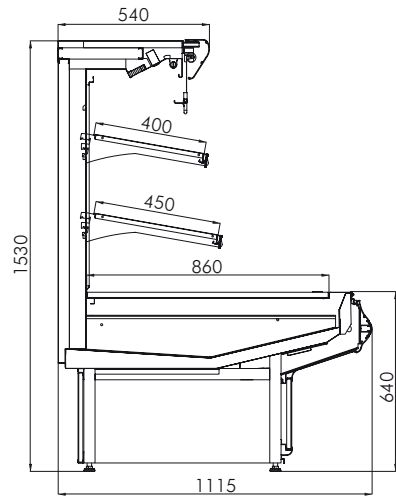


# Alet

SEMI-VERTICAL CABINET FOR DAIRY, MEAT, FRUIT AND VEGETABLE PRODUCTS



- Remote Cabinet perfect for multiple products
- Equiped with two rows shelving for ample space
- High refrigeration output, low energy consumption
- Low shelf provides easy accessibility for products
- Equal air flow between display shelves
- Superior insulation for energy efficient performance
- Tailor made finishing - Cabinet Colour per requirement
- Under-Shelf Lighting (T5 or LED)
- Electrical or Manual Night Blinds



cabinet length without endwalls	(mm)	937	1250	1875	2500	3750
display area	(m <sup>2</sup> )	1,60	2,14	3,21	4,28	6,41
operating voltage	(V/Hz)	230V/50/60Hz				
working temperature	(°C)	+ 2 / +4				

# Arata

MULTIDECK CABINET FOR DAIRY, MEAT AND BEVERAGE PRODUCTS

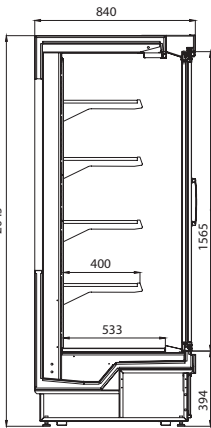


- Equal air flow between the display shelves
- High refrigeration output, low energy consumption
- Superior insulation for energy efficient performance
- Ergonomic design
- Easy maintenance and cleaning
- Tailor made finishing - Cabinet Colour per requirement

- OPTIONAL ACCESSORIES
- Additional shelving
  - Plexi glass shelf barriers
  - Undershelf lighting (LED)

## Technical Details

Cabinet length without endwalls (mm)	1250	1875	2500
Display area (m²)	2.66	3.19	5.32
Working temperature	-1 / +1 °C 0 / +2 °C +2 / +4 °C		
Operating voltage	230 V/50/60 Hz		



Operating features are based on ambient conditions of 25 °C temperature and 60% relative humidity. Any technical features may be modified without notice.

# Amarah

FROZEN DISPLAY CABINET



- Remote or Plug-in version for different installation needs
- Available in 2,3,4,5 door modules to suit various requirements
- Multiple rows of display shelves to showcase products effectively
- Superior insulation for energy efficient performance
- Matte aluminium door and frames for sleek and modern look
- Heater resistance in frame for F-FL models to prevent condensation

OPTIONAL ACCESSORIES

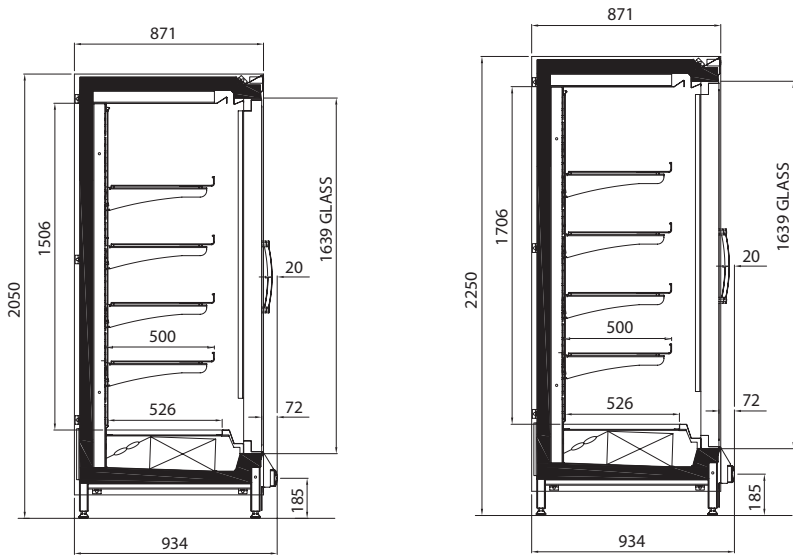
- Glass side walls to enhance visibility
- Wire base shelf to improve durability
- Grid basket in base for added functionality
- Wire separators for professional display





■ Technical Details

AMARAH F/ B



Doors		2	3	4	5	
Cabinet length without endwalls		(mm)	1562	2343	3124	3898
Display area	( m²)	AMARAH F	4.73	7.09	9.45	11.80
		AMARAH B				
		AMARAH FL	5.51	8.26	11.02	13.74
		AMARAH BL				
Net capacity		AMARAH F	1294	1941	2588	3229
		AMARAH B				
		AMARAH FL	1466	2198	2931	3657
		AMARAH BL				
Working temperature		AMARAH F	-18 / -22 °C	-20 / -24 °C		
		AMARAH FL				
		AMARAH B	+2 / +4 °C	+6 / +8 °C		
		AMARAH BL				
Operating voltage		230 V/50/60 Hz				

Operating features are based on ambient conditions of 25 °C temperature and 60% relative humidity. Any technical features may be modified without notice.

# Atama

FROZEN ATTACHABLE CABINET



Plug-in cabinet.

2,3 doors versions

Modern design and functional details

Cabinet construction built to highest quality standards

High performance, large display, and loading capacity

Color choice according to decoration.

## OPTIONAL ACCESSORIES :

Base display grid

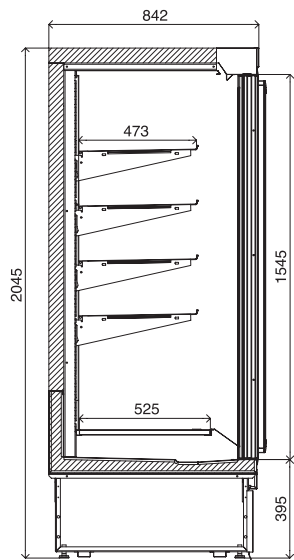
Base display grid basket

Wire divider



■ Technical Details

Atama FULL GLASSDOOR



Atama FGD

Cabinet length without endwalls (mm)	1250	1875
Display area ( m²)	3	4.5
Cubic capacity ( dm³)	945	1418
Working temperature	-18 / -20 °C	
Operating voltage	230 V/50/60 Hz	

Operating features are based on ambient conditions of 25 °C temperature and 60% relative humidity. Any technical features may be modified without notice.



# Nova

COMBINATION FREEZER

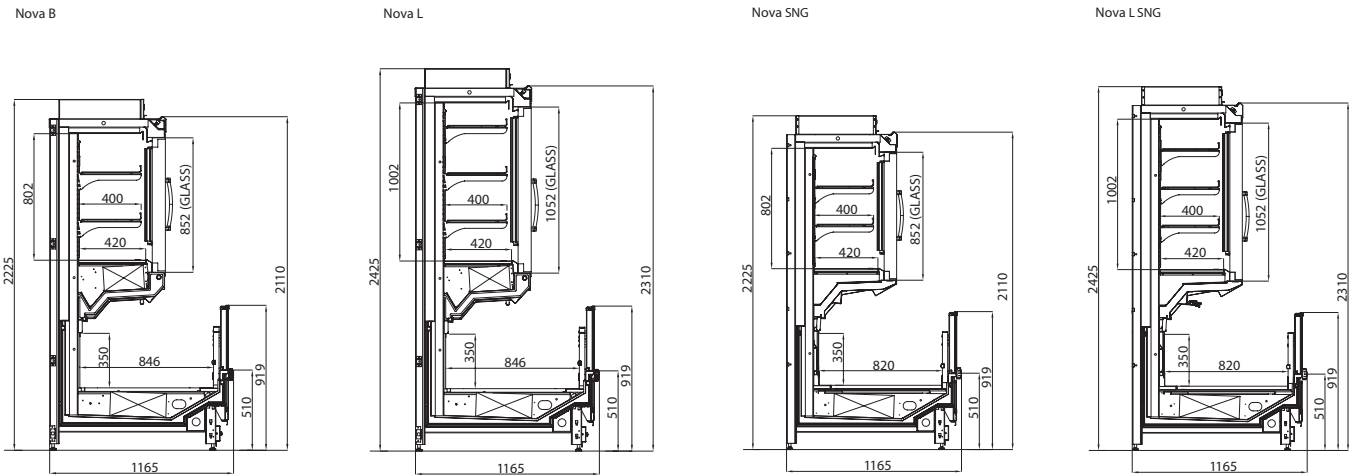


- Remote cabinet.
- Modern design and functional details
- Cabinet construction built to highest quality standards
- High performance, large display, and loading capacity
- Color choice according to decoration.
- Half glass door and well combination.

- OPTIONAL ACCESSORIES
- Extended canopy lighting
  - LED lighting
  - Sliding lids for well section
  - Height adjustable display grid
  - Wire dividers



■ Technical Details



Cabinet length without endwalls (mm)		Display area (m²)		Cubic capacity (d³)	
		upper section	well section	upper section	well section
Nova	2500	3.05	2.12	840	740
Nova	3750	4.58	3.18	1260	1110
Nova L	2500	4.05	2.12	1050	740
Nova L	3750	6.09	3.18	1575	1110
Nova SNG	2500	3.05	2.05	840	700
Nova SNG	3750	4.58	3.09	1260	1050
Nova L SNG	2500	4.05	2.05	1050	700
Nova L SNG	3750	6.09	3.09	1575	1050

-18 / -24 °C

Operating features are based on ambient conditions of 25 °C temperature and 60% relative humidity. Any technical features may be modified without notice.

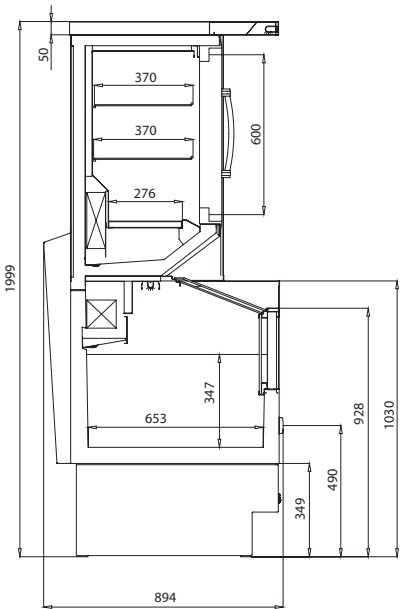
# Daburu

PLUG&PLAY COMBINATION FREEZER



- Plug-in cabinet
- Modern design and functional details
- Cabinet construction built to highest quality standards
- High performance, large display, and loading capacity
- Color choice according to decoration.
- OPTIONAL ACCESSORIES :
- Sliding lids for well section
- Height adjustable display grid
- Wire dividers.

■ Technical Details



Lenght with endwall ( mm )		Class (according to EN23953-2)	Temperature Range	TDA (according to EN23953-2)	Rating Power ( W )		Defrosting Power ( W )	
					top	bottom	top	bottom
Daburu	2000	3L1	- 18 / - 24 °C	1,03	1170	716	1457	1017

Operating features are based on ambient conditions of 25 °C temperature and 60% relative humidity. Any technical features may be modified without notice.



# Conzu

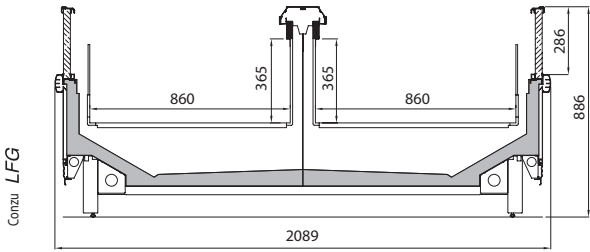
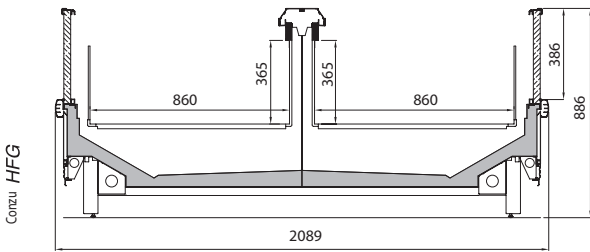
ISLAND FREEZERS FOR FRESH AND FROZEN PRODUCTS



- Modern design and functional details
- CE (End module) application
- High Construction and performance quality
- Wide presentation area and loading space
- 0°C, -20°C, -24°C, three different cooling application
- Variable color options



■ Technical Details

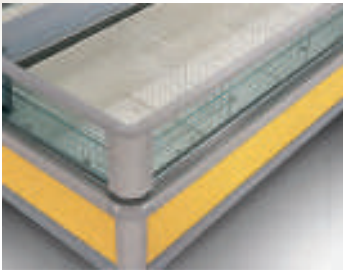


	Cabinet length without endwalls (mm)	Display area (m²)	Cubic capacity (dm³)	Operating temperature range (°C)
Conzu LFG/HFG	1875, 2500, 3750	3.23, 4.30, 6.45	1177, 1570, 2354	0 / 2 °C -18 / -20 °C -22 / -24 °C

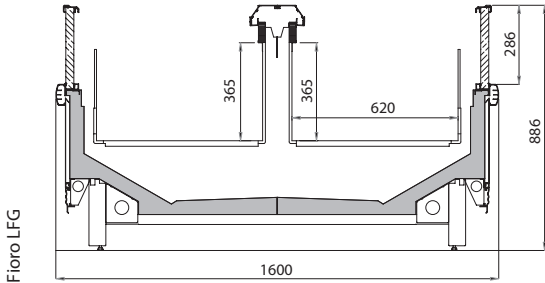
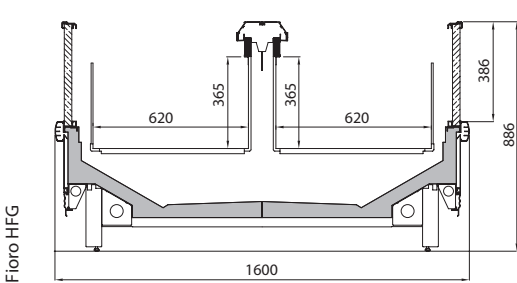
Operating features are based on ambient conditions of 25 °C temperature and 60% relative humidity. Any technical features may be modified without notice.

# Fioro

ISLAND FREEZERS FOR FRESH AND FROZEN PRODUCTS



- Modern design and functional details
- CE (End module) application
- High construction and performance quality
- Wide presentation area and loading space
- 0°C, -20°C, -24°C, three different cooling application
- Variable color options



	Cabinet length without endwalls (mm)	Display area (m²)	Cubic capacity (dm³)	
Fioro LFG/HFG	1875, 2500, 3750	2.33, 3.10, 4.65	849, 1132, 1697	0 / 2 °C -18 / -20 °C -22 / -24 °C

Operating features are based on ambient conditions of 25 °C temperature and 60% relative humidity. Any technical features may be modified without notice.

# Kopto

ISLAND FREEZERS FOR FRESH AND FROZEN PRODUCTS

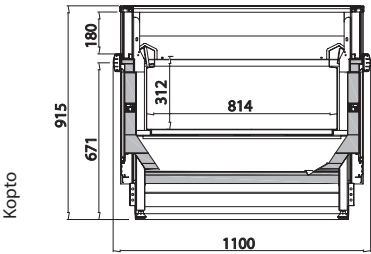


- Modern design and functional details
- High Construction and performance quality
- 0°C, -20°C, -24°C, three different cooling application
- Variable color options

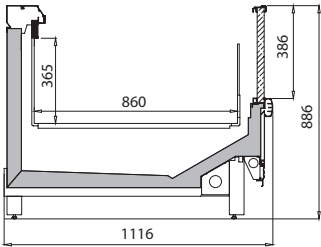
OPTIONAL ACCESSORIES

- Sliding glass cover
- With or without lighting single or double layer ambient presentation shelf
- Night cover application
- Height adjustable base wire
- Wire divider

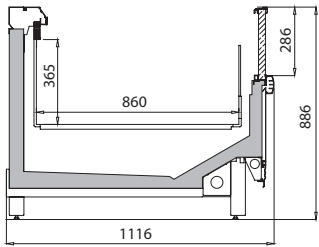
Kopto



Kopto HFG



Kopto LFG

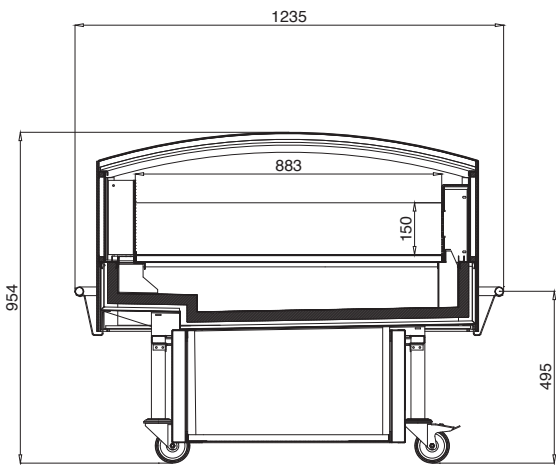


	Cabinet length without endwalls (mm)	Display area ( m²)	Cubic capacity ( dm³)	
Kopto	1875, 2500, 3750	1.53, 2.04, 3.06	476, 635, 952	0 / 2 °C   -18 / -20 °C   -22 / -24 °C

Operating features are based on ambient conditions of 25 °C temperature and 60% relative humidity. Any technical features may be modified without notice.

# Era

PLUG - IN CABINET FOR PROMOTIONAL PRODUCTS



- Highly mobile with integrated wheels
- Increased loading capacity
- Modern design and functional details
- Cabinet construction built to highest quality standards
- Stainless steel interior option

	Dimensions exc. bumper ( mm )	Dimensions inc. bumper ( mm )	Class (according to EN23953-2)	Temperature Range	TDA (according to EN23953-2)	Volume ( dm <sup>3</sup> )	DEC (according to EN23953-2) ( kW )
Era	1100 x 1100	1235 x 1235	3M1	0 / + 2 °C	0,90	130	10,08

Operating features are based on ambient conditions of 25 °C temperature and 60% relative humidity. Any technical features may be modified without notice.



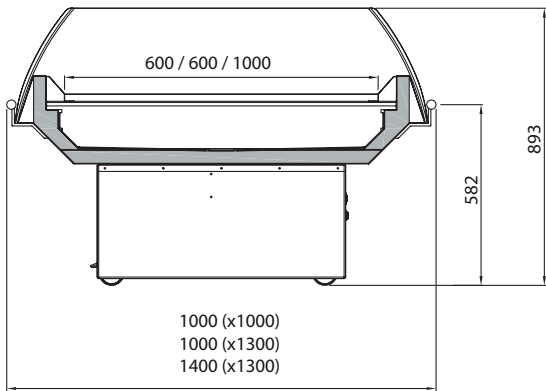
# Erabas

PROMOTION PRODUCTS

PLUG - IN CABINET FOR PROMOTIONAL PRODUCTS



Plug-in cabinet  
Modern design with functional details  
Cabinet construction built to highest quality standards  
Refrigerating temperature of +3°C, +5°C  
Color choices and decoration according to customer specification



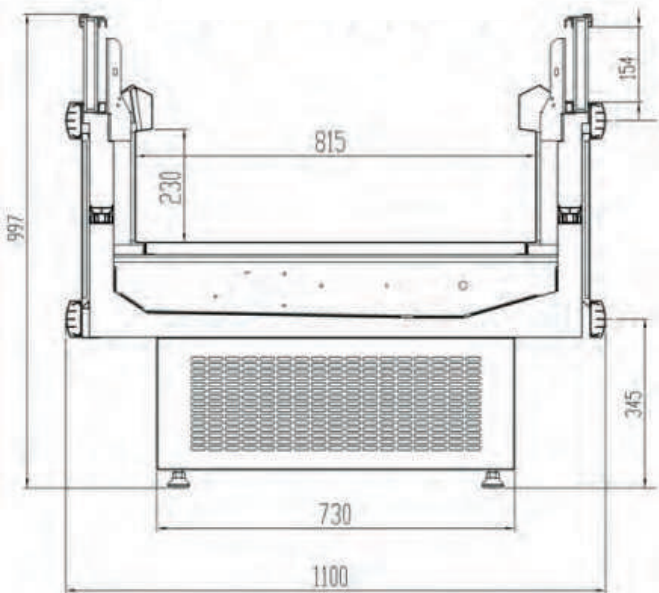
cabinet length without endwalls (mm)	1000x1000	1300x1000	1300x1400
display area ( m²)	0.58	0.75	1.25
working temperature	+3 / +5 °C		
operating voltage	230 V/50/60 Hz		

# Erata

PLUG - IN CABINET FOR PROMOTIONAL PRODUCTS



ERATA PLUG-IN



- Higly mobile with integrated wheels
- Increased loading capacity
- Modern design and functional details
- Cabinet construction built to highest quality standards
- Stainless steel interior

**airfel**

*Play it Cool*

CONNECT WITH US

